

DOP-B



ASIA

Delta Electronics, Inc.
Taoyuan1

31-1, Xingbang Road, Guishan Industrial Zone,
Taoyuan County 33370, Taiwan, R.O.C.
TEL: 886-3-362-6301 / FAX: 886-3-362-7267

Delta Electronics (Jiang Su) Ltd.
Wujiang Plant3

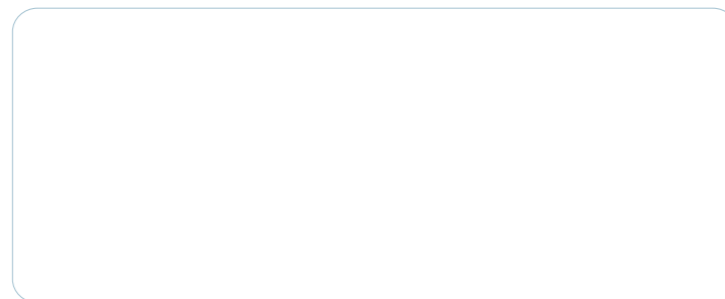
1688 Jiangxing East Road,
Wujiang Economy Development Zone,
Wujiang City, Jiang Su Province,
People's Republic of China (Post code: 215200)
TEL: 86-512-6340-3008 / FAX: 86-769-6340-7290

EUROPE

Deltronics (The Netherlands) B.V.
Eindhoven Office

De Witbogt 15, 5652 AG Eindhoven, The Netherlands
TEL: 31-40-2592850 / FAX: 31-40-2592851

107392, , ., .7,
/ : (495) 661-24-61
E-mail: sales@deltronics.ru
<http://www.deltronics.ru>

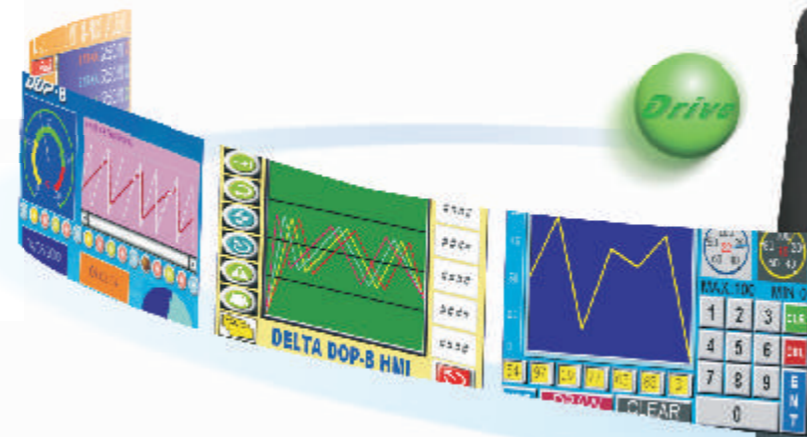


DOP-B



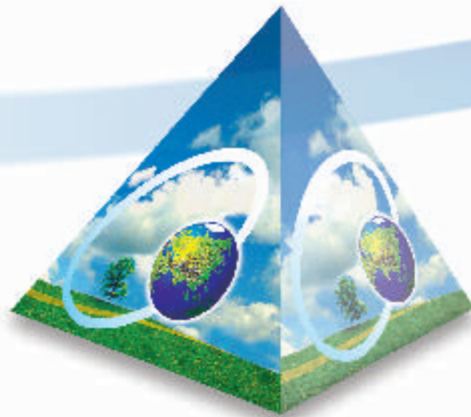
DOP-B

Screen Editor -	
DOP-B	(65536 .)
TFT	,
	,



Best Performance

Beautiful Display



Beneficial Features



B05

			COM	Ethernet	USB Host	USB Client		
DOP-B05S100	5.6	TFT 65536	3		1	1		-
DOP-B05S101*	5.6	TFT 65536	3		1	1		

* DOP-B05S101



B07

			COM	Ethernet	USB Host	USB Client		
DOP-B07S201	7	TFT 65536	3		1	1		-
DOP-B07E205*	7	TFT 65536	3	10/100 Base-T	1	1	SD	

*



B07

			COM	Ethernet	USB Host	USB Client		
DOP-B07S211	7	TFT 65536	3		1	1		-
DOP-B07E215*	7	TFT 65536	3	10/100 Base-T	1	1	SD	

*



B10

			COM	Ethernet	USB Host	USB Client		
DOP-B10S615	10.1	TFT 65536	3		1	1	SD	-
DOP-B10E615	10.1	TFT 65536	3	10/100 Base-T	1	1	SD	





>

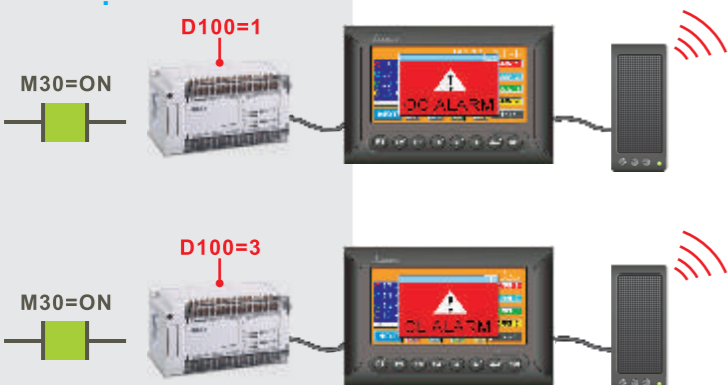


(65536 .) TFT

>



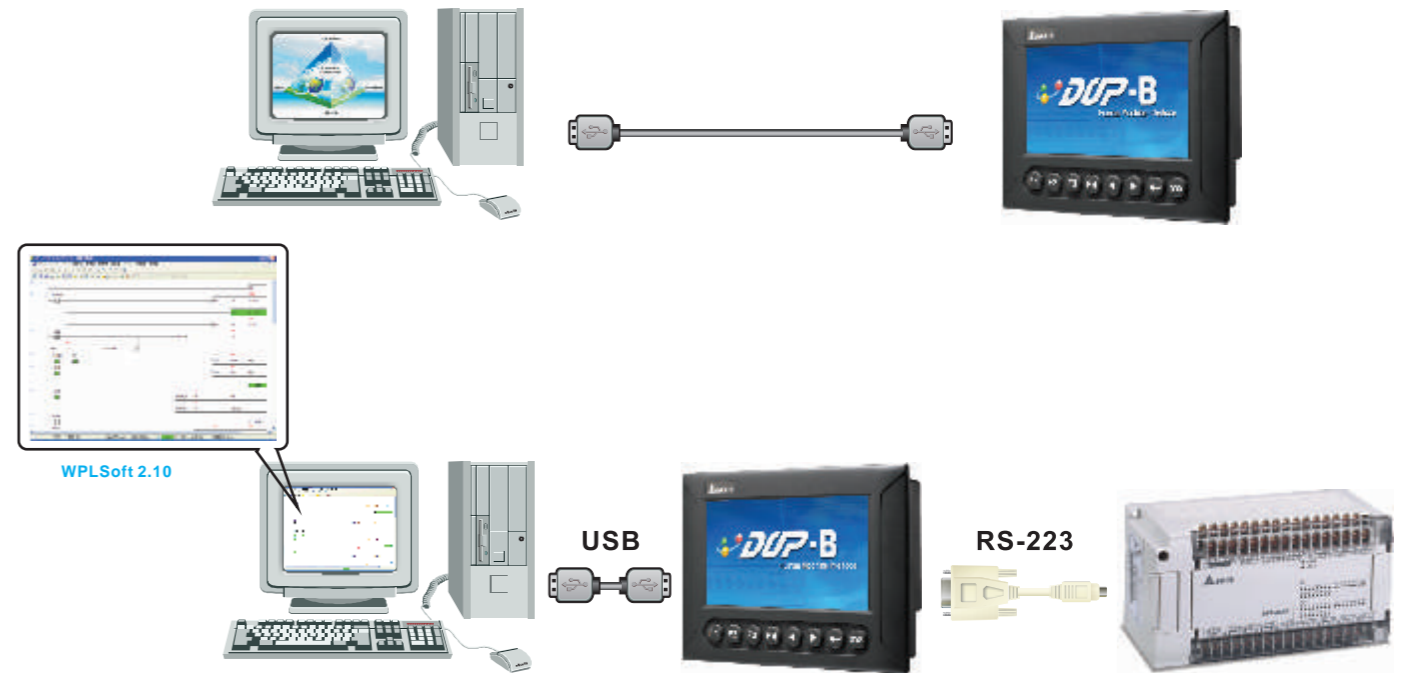
Ø 3.5



D100		
1	A.wav	
2	B.wav	
3	C.wav	

> USB

(USB B)



Delta

USB

(USB A)

USB Hub



5 USB-



> SD / USB-

- SD USB
- SD USB-MS Windows

(FAT32, 8)



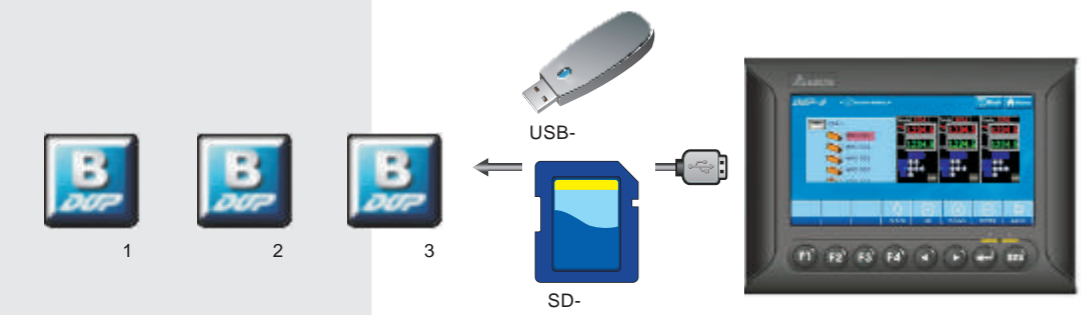
Excel,

CSV-



USB-

CSV- SD



SD USB-

> DOP-



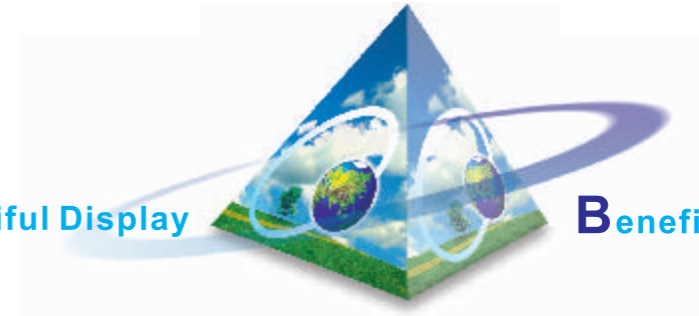
- SD/USB
- SD/USB



- G- DVP-PM SD/USB

Best Performance

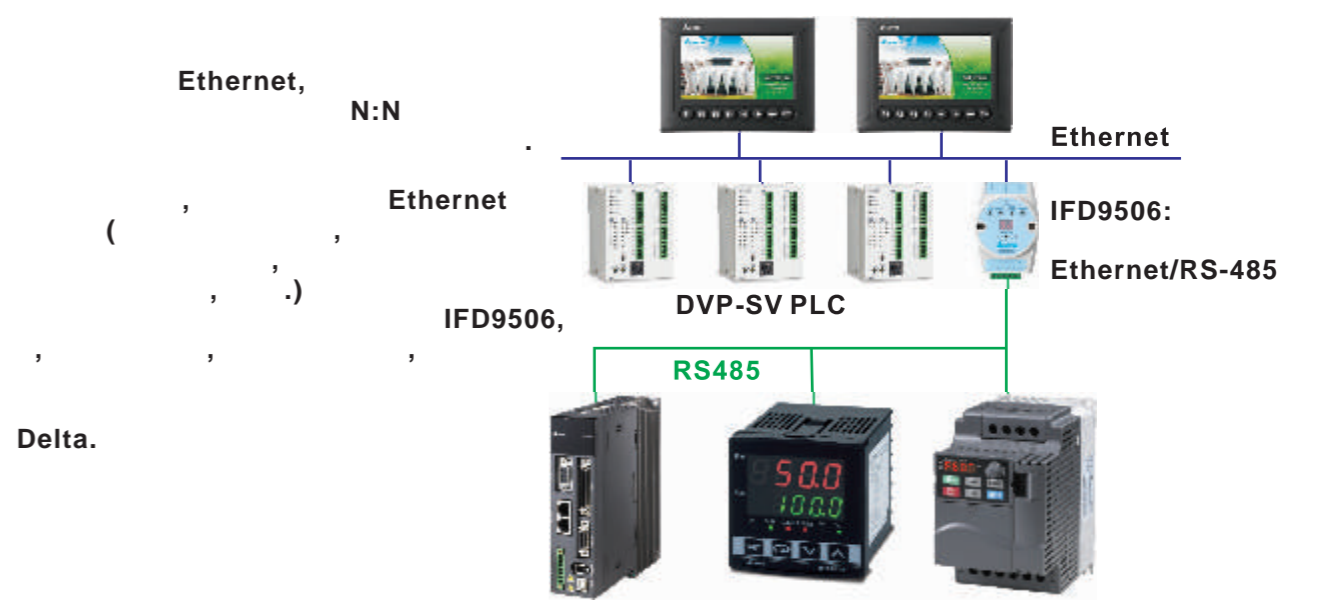
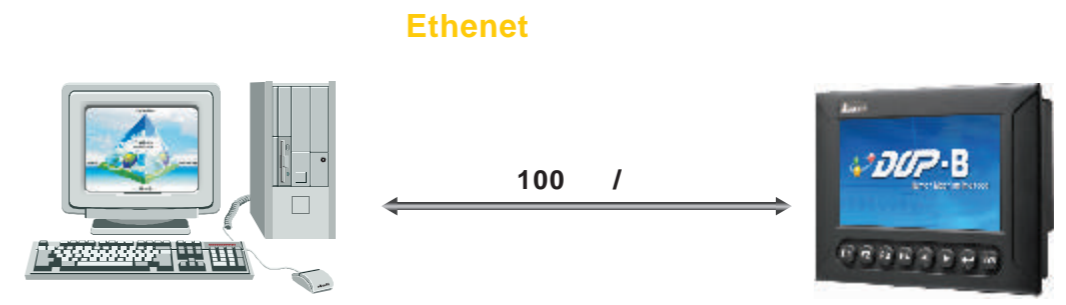
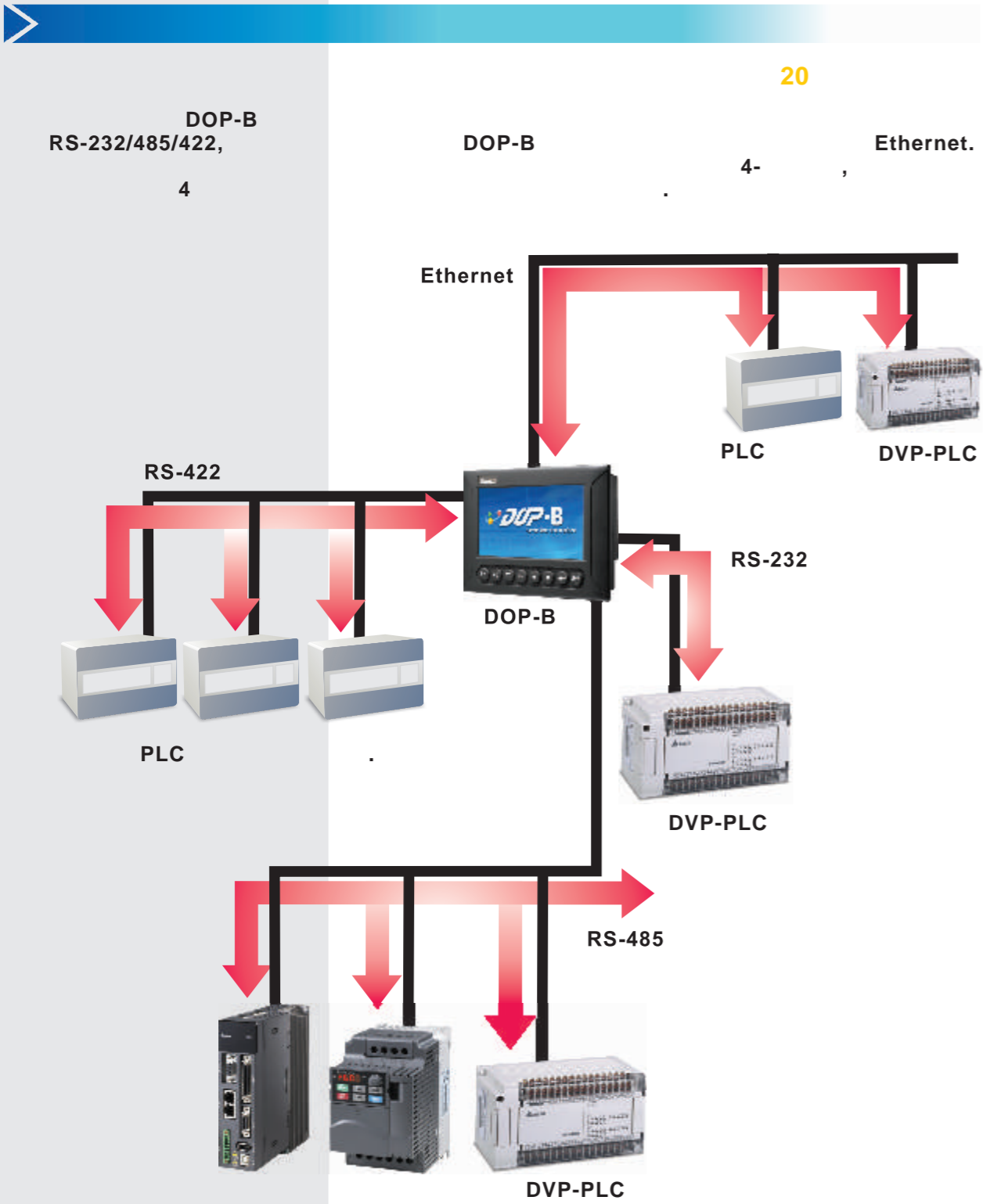
Beautiful Display



Beneficial Features



Ethernet



Screen Editor 2.00

DOP-B.

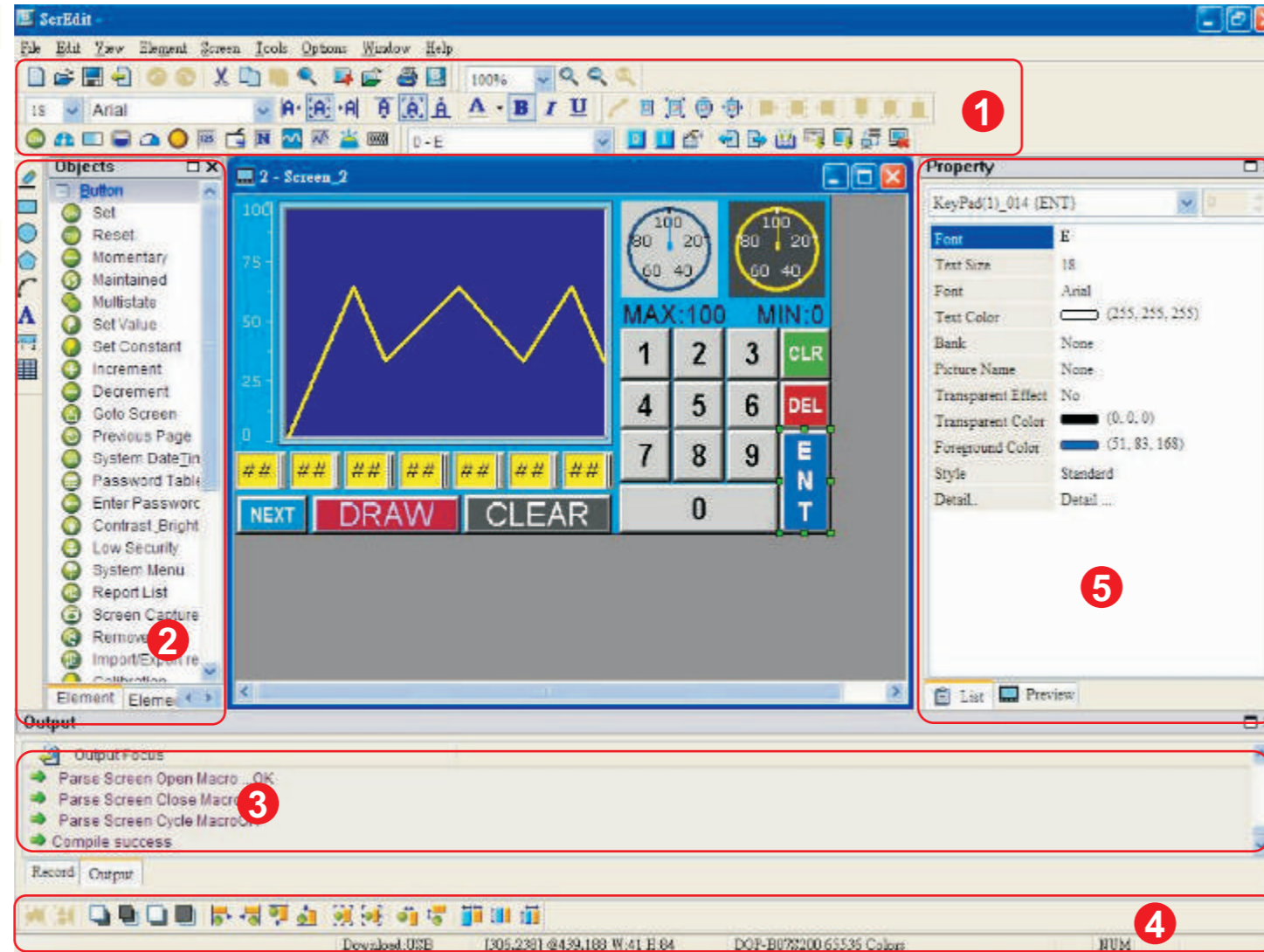
1

2

3

4

5



Screen Editor 2.00.08

DOP-A/AE/AS
DOP-B.



Screen Editor 2.00

Pentium III, 500

256

400

800 600

Windows 2000 XP

Windows® 2000 / Windows® XP

* Screen Editor
<http://www.delta.com.tw/industrialautomation/>

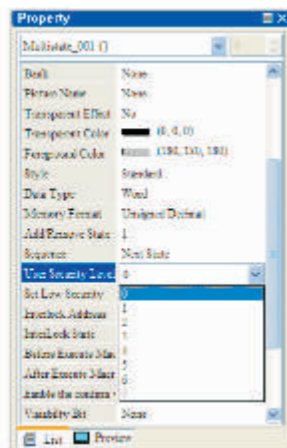
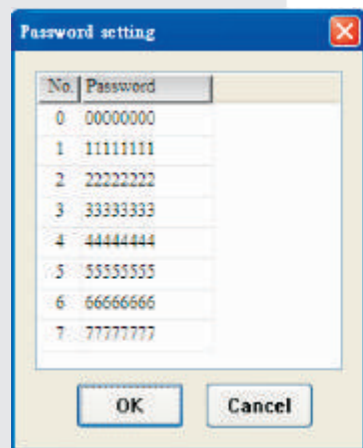


DOP-B

16 ()



(8),

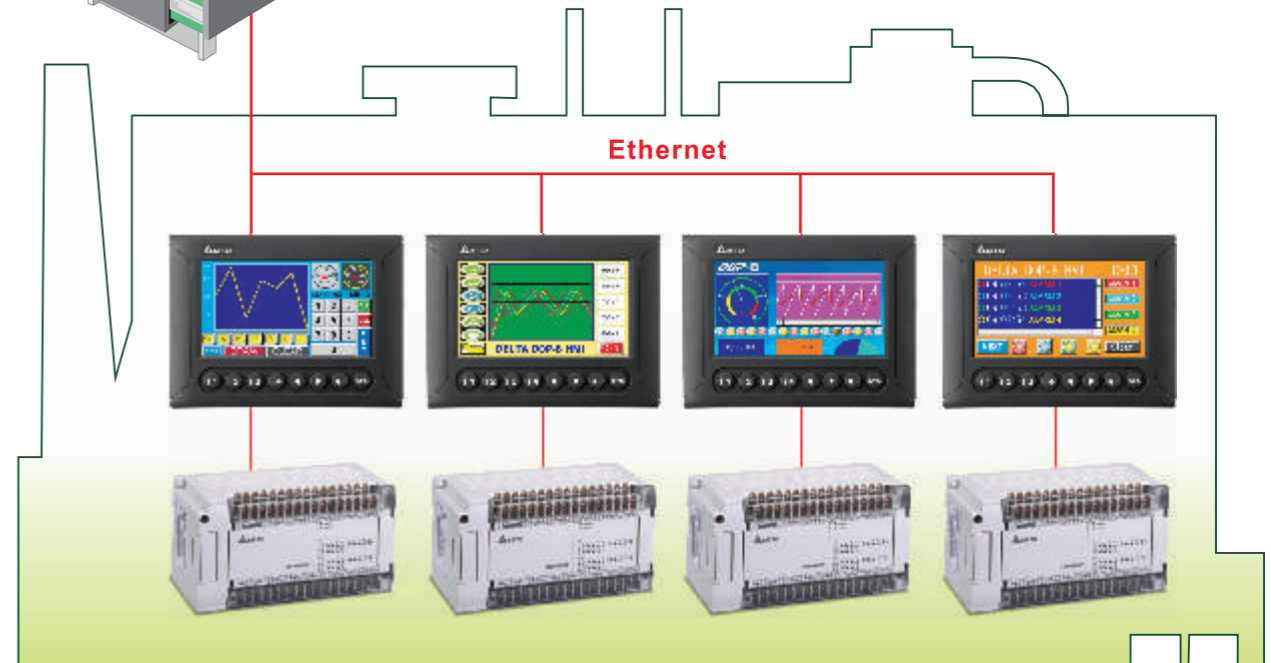
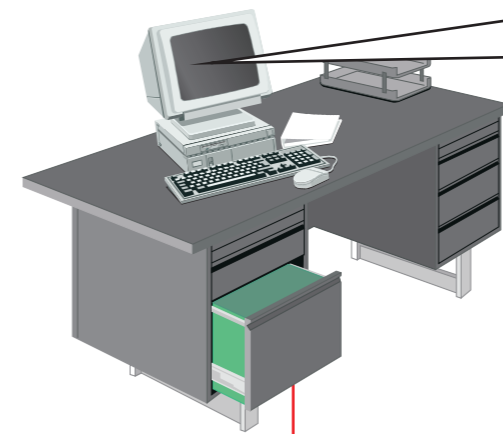




DOP eRemote
eRemote

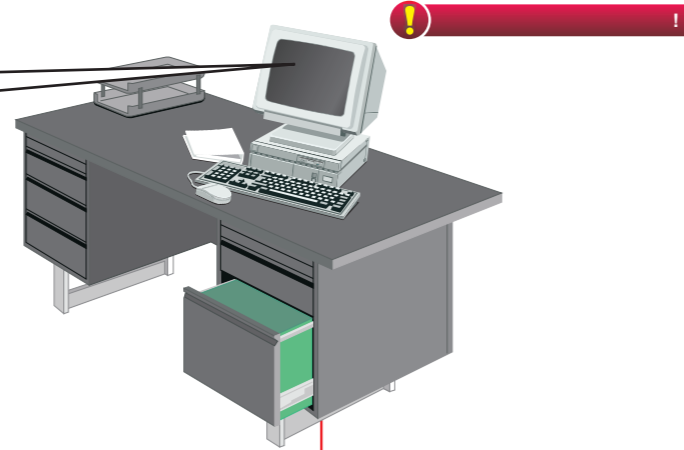
DOP-B.

Ethernet



DOP eServer
eServer
DOP-B Ethernet

Daily Report				
Time	Data 1	Data 2	Data 3	Data 4
2009/4/22 AM 07:30	24	56	67	99
2009/4/22 AM 08:30	74	41	93	48
2009/4/22 AM 09:30	14	74	32	56
2009/4/22 AM 10:30	53	24	12	34
2009/4/22 AM 11:30	99	32	16	85
2009/4/22 AM 12:30	24	62	36	83
2009/4/22 PM 01:30	14	95	23	90



D0	14
D1	95
D2	23
D3	90

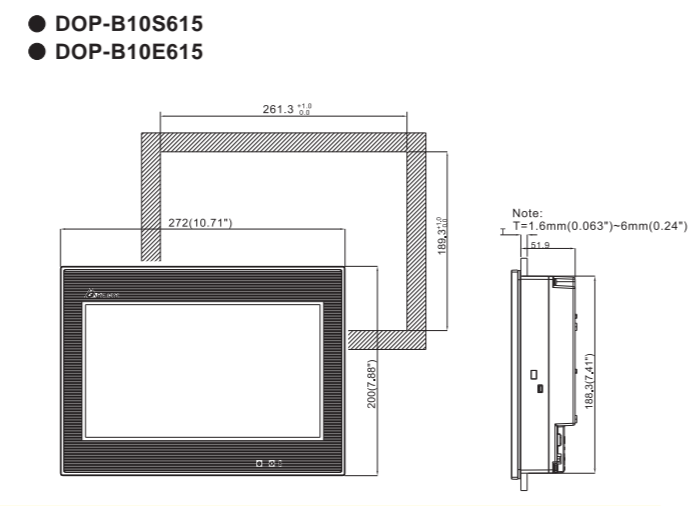
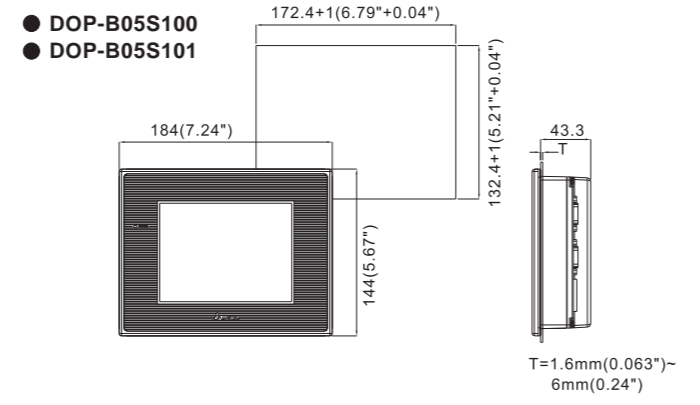
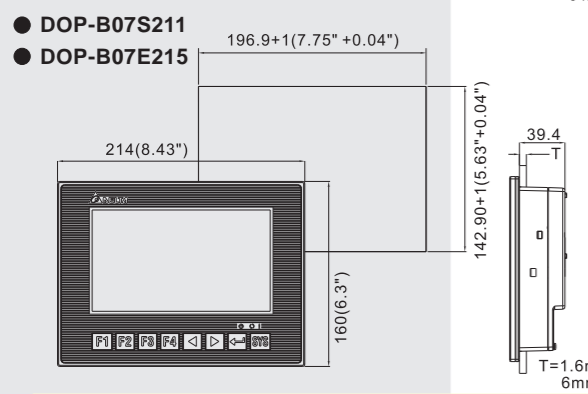
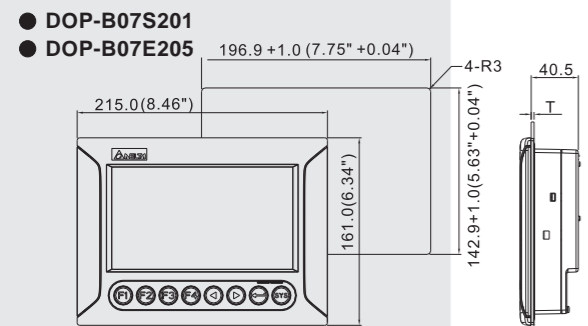
Excel-

Excel-

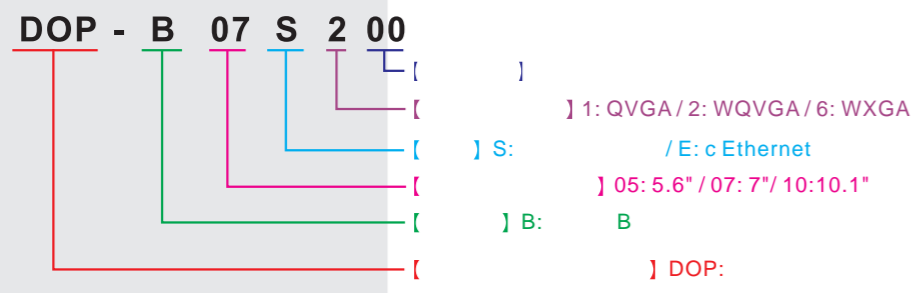
DOP-eRemote/eServer

	Pentium III, 500
	256
	400
	800 600
	Windows 2000 XP
	Windows® 2000 / Windows® XP

* DOP-eRemote DOP-eServer
<http://www.delta.com.tw/industrialautomation/>



DOP-CA232DP	RS-232	DOP c DVP-PLC (DB9)
DVPACAB2A30	RS-232	DOP c DVP-PLC (DB9)
DOP-CAUSBAB	USB	DOP c PC



	DOP-B05S100	DOP-B05S101	DOP-B07S201	DOP-B07S211	DOP-B10S615	DOP-B10E615
Display	5.6" TFT LCD (65536)	5.6" TFT LCD (65536)	7" TFT LCD (65536)	7" TFT LCD (65536)	10.1" TFT LCD (65536)	10.1" TFT LCD (65536)
Resolution	320 x 234	320 x 234	480 x 234	480 x 234	1024 x 600	1024 x 600
Backlight	LED (.20000 25°C) ⁽¹⁾					
OS	Delta Real Time OS					
Micro-controller	32-bit RISC Micro-controller					
NOR Flash ROM	2MB	6MB	4MB	4MB	82MB	82MB
SDRAM	8MB	16MB	16MB	16MB	64MB	64MB
EEPROM	128KB	128KB	256KB	256KB	16MB	16MB
Buttons	(2 - 4) / 85					
Ethernet	-	-	-	-	-	10/100 / () ⁽³⁾
Storage	SD Card (SDHC)					
USB	1 USB Host ⁽²⁾ Ver 1.1 / 1 USB Client Ver 1.1					
COM1	RS-232 ()					
COM2	RS-232 / RS-485	RS-232 / RS-422 / RS-485	RS-232 / RS-422 / RS-485	RS-232 / RS-422 / RS-485	RS-232 / RS-422 / RS-485	RS-232 / RS-422 / RS-485 ⁽³⁾
COM3	RS-422 / RS-485	RS-232 / RS-422 / RS-485	RS-232 / RS-422 / RS-485	RS-232 / RS-422 / RS-485	RS-232 / RS-422 / RS-485	RS-232 / RS-422 / RS-485 ⁽³⁾
Ports	-	-	4	4	-	-
Environment	IP65 / NEMA4 / CE, UL ⁽⁴⁾					
Power	DC +24V (-10% ~ +15%) ()			DC +24V(-10% ~ +15%) ⁽³⁾		
AC Input	AC500V .1 ((DC24) FG)					
Power Consumption	3.0	3.0	4.8	4.8	12	12
Battery	3 V CR2032 x 1					
Temperature	(3 25°C)					
Operating Temp	0°C ~ 50°C					
Storage Temp	-20°C ~ +60°C					
Humidity	10% ~ 90% RH [0 ~ 40°C], 10% ~ 55% RH [41 ~ 50°C]					
Shock	2					
Vibration	IEC 61131-2: 5 <=f<=9 1,0 G 1,75 / X,Y,Z 10 3,5					
Dimensions (mm)	184 x 144 x 50	184 x 144 x 50	215 x 161 x 50	215 x 161 x 48	272 x 200 x 61	272 x 200 x 61
Dimensions (mm)	172.4 x 132.4	172.4 x 132.4	196.9 x 142.9	196.9 x 142.9	261.3 X 189.3	261.3 X 189.3
Weight (g)	670	670	880	840	1520	1520

1) LED- 50%
 2) USB Host 5V/500mA.
 3) UL 1500V 1
 4) DOP-B07S200 UL UL
 5) 1.5 -2 -
 6) Screen Editor 2.00, <http://www.delta.com.tw/industrialautomation/>